



## SPLIT LEVEL LIVING

Kingsbury at Providence  
 LOT 1354 Watheroo Street – South Ripley

**\$585,850**

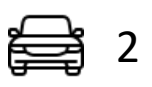
### HOUSE AND LAND PACKAGE



+ 4 Living



**Land Area:**  
592m<sup>2</sup>



**Specifications:**  
QLD Inclusions

- House Area:** 290m<sup>2</sup>
- Inclusions**
- Fixed Site Costs
  - Stone benchtops throughout kitchen/ bathrooms/ laundry
  - Quality Beko appliances 900mm Electric Oven/Gas Cooktop
  - Rangehood (ducted to outside)
  - Dishwasher and built in microwave
  - 2590mm ceiling height
  - LED Downlights and ceiling fans throughout
  - Tiled wall niche to each shower
  - Exposed aggregate driveway

#### Invision Summertime Promotion

9kw ducted air conditioning system – no cost  
 OR

6.6kw solar power system 21 panels with an  
 Invision Home Upgrades Voucher  
 (\$1,500 single story / \$3,000 double story)

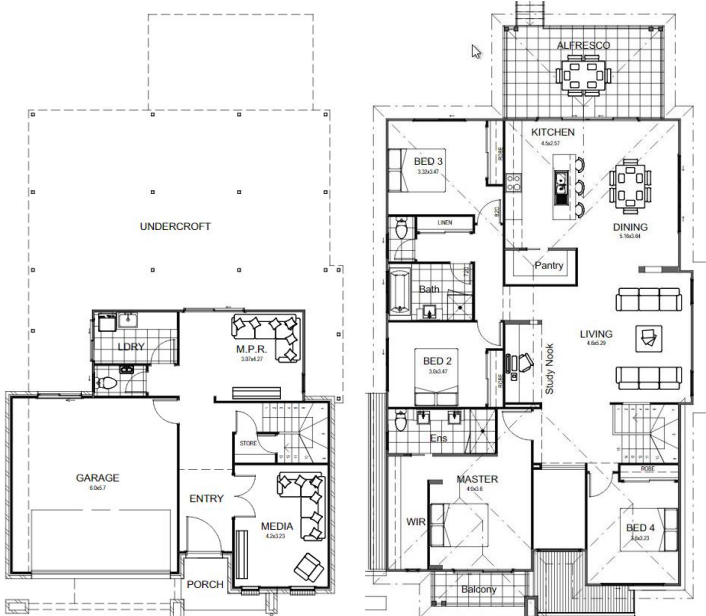
**Darryn Whelan – 0412 438 333**

[darryn@invisionhomes.com.au](mailto:darryn@invisionhomes.com.au)

[www.invisionhomes.com.au](http://www.invisionhomes.com.au)

QBCC License 1089281

All Images are for illustrative purposes only  
 and all dimensions are approximate



**Building the  
 Queensland  
 Lifestyle**