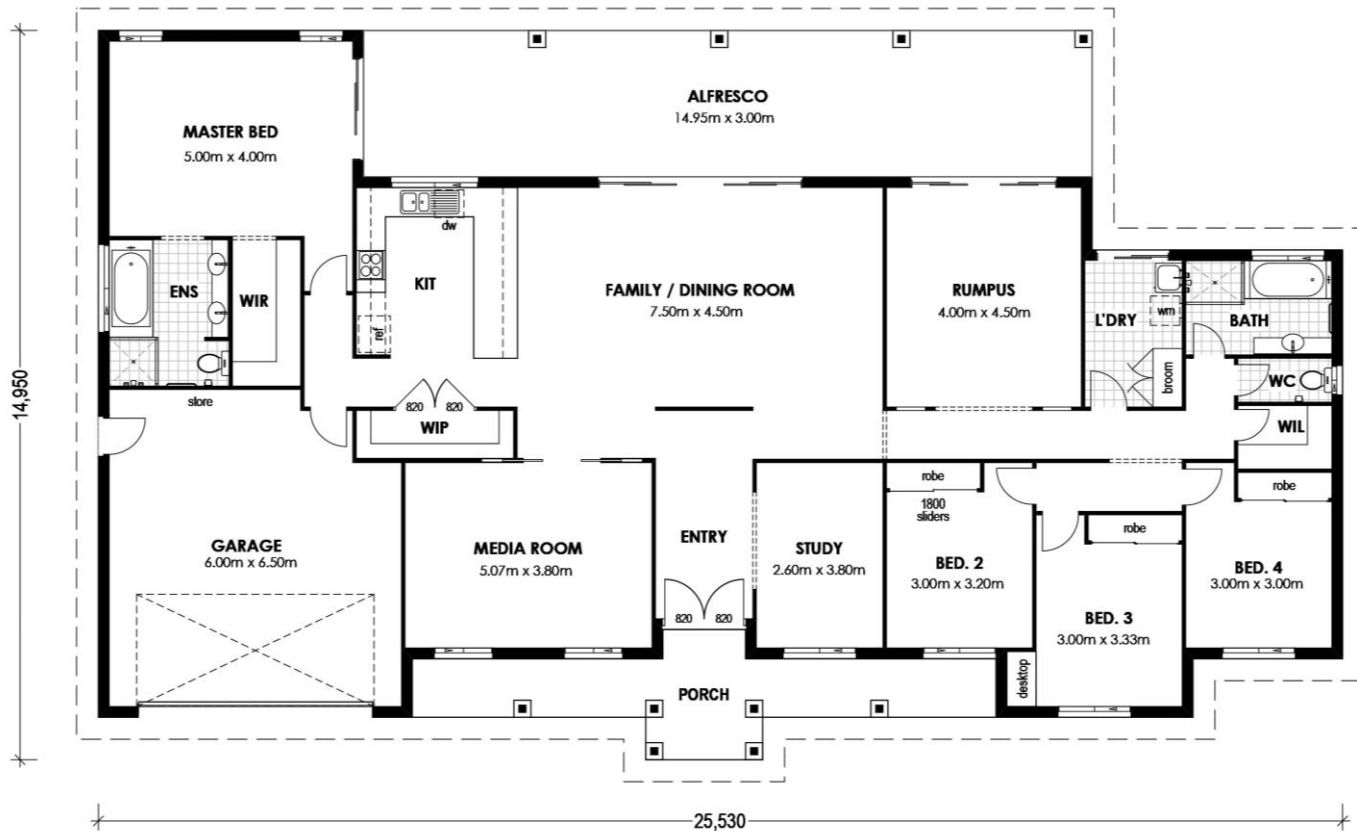


# BIRDSVILLE 334



## FLOOR AREAS

Living	232.30m <sup>2</sup>
Garage	40.10m <sup>2</sup>
Porch	17.50m <sup>2</sup>
Alfresco	44.80m <sup>2</sup>
<b>Total</b>	<b>334.70m<sup>2</sup></b>

## Acreage

Width: 25.53m / Length: 14.95m

Entry Portico Size Will Vary  
Depending on Façade Type.

May not suit all blocks  
depending on façade type.

All Images are for illustrative purposes only and all  
dimensions are approximate



**Building the  
Queensland  
Lifestyle**

[www.invisionhomes.com.au](http://www.invisionhomes.com.au)

QBCC Licence 1089281