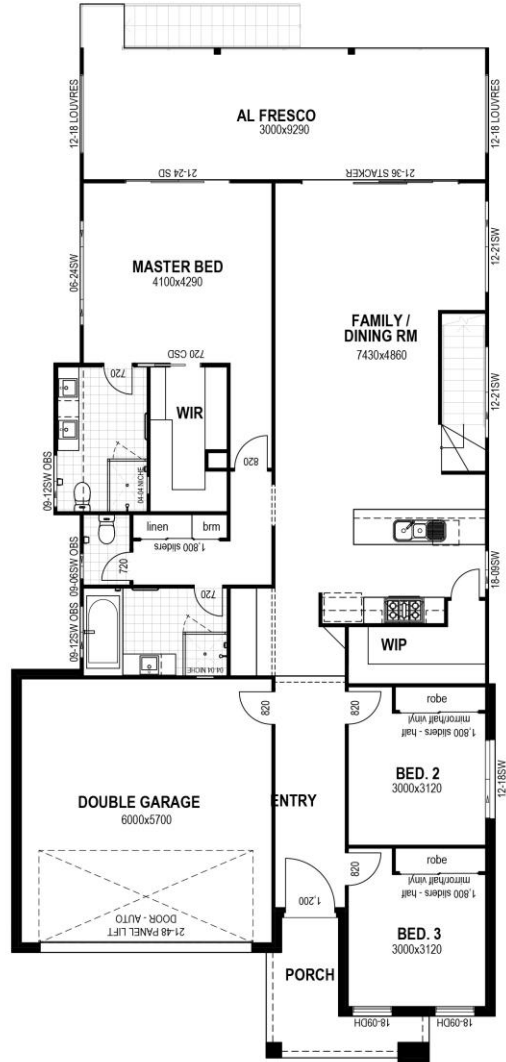
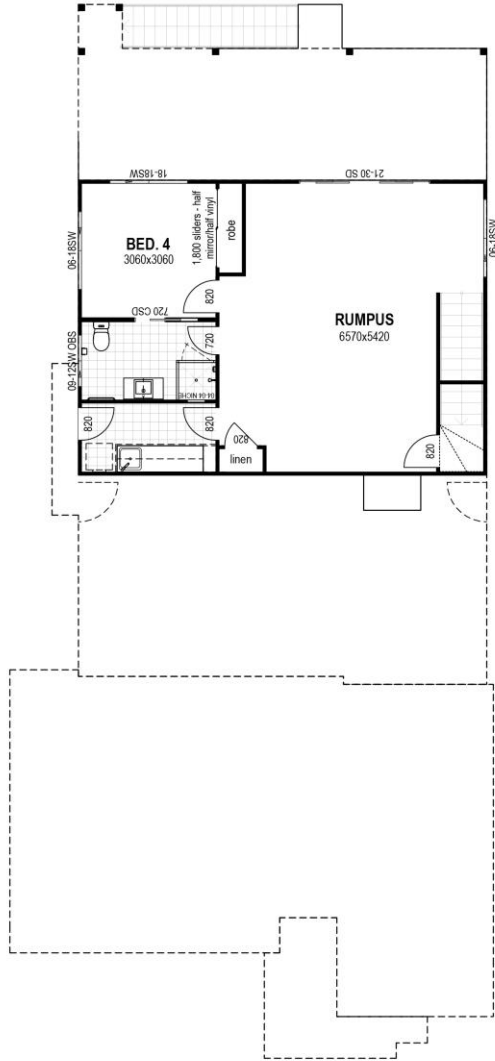


# GRACEVILLE 273



## FLOOR AREAS

Upper Living	142.00m <sup>2</sup>
Lower Living	62.30m <sup>2</sup>
Garage	36.80m <sup>2</sup>
Porch	4.70m <sup>2</sup>
Alfresco	27.90m <sup>2</sup>
<b>Total</b>	<b>273.70m<sup>2</sup></b>

MIN. SPLIT BLOCK WIDTH 12.5m

Width: 11.00m / Length: 23.10m

Entry Portico Size Will Vary  
Depending on Façade Type.

May not suit all blocks  
depending on façade type.

All Images are for illustrative purposes only and all  
dimensions are approximate



**Building the  
Queensland  
Lifestyle**

[www.invisionhomes.com.au](http://www.invisionhomes.com.au)

QBCC Licence 1089281