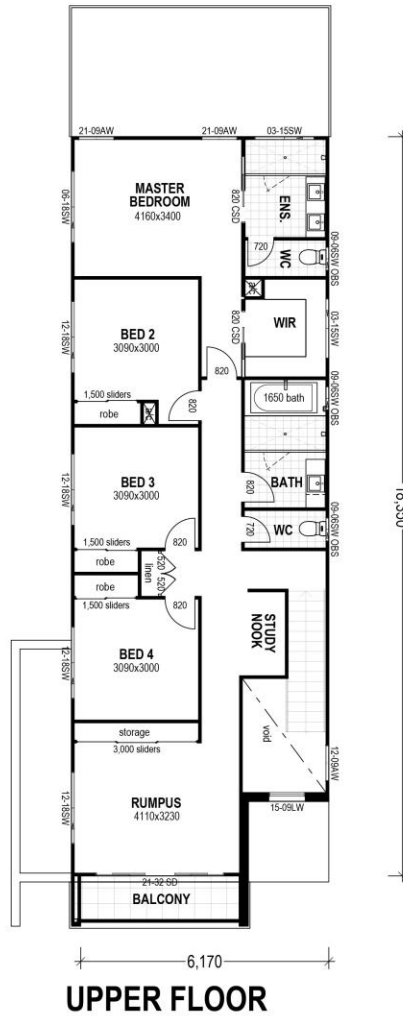
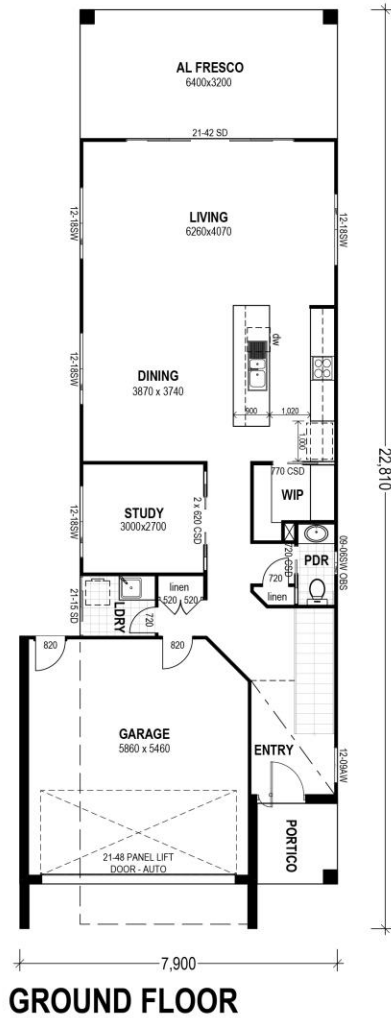


# BANYO 267



## FLOOR AREAS

Upper Living	113.70m <sup>2</sup>
Lower Living	89.10m <sup>2</sup>
Garage	34.80m <sup>2</sup>
Porch	4.00m <sup>2</sup>
Balcony	5.10m <sup>2</sup>
Alfresco	20.50m <sup>2</sup>
<b>Total</b>	<b>267.20m<sup>2</sup></b>

Width: 7.90m / Length: 22.81m

Entry Portico Size Will Vary Depending on Façade Type.

May not suit all blocks depending on façade type.

All Images are for illustrative purposes only and all dimensions are approximate



**Building the Queensland Lifestyle**

[www.invisionhomes.com.au](http://www.invisionhomes.com.au)

QBCC Licence 1089281